



The Loxdale Local



Autumn 1 2024



Welcome back:

It is so lovely to have all our pupils back in school, including our new pupils and families. We look forward to another great year together. We have lots planned and cannot wait to welcome parents and carers into school for a range of events. Please see the list of planned events overleaf.

We would also like to welcome all of our new staff- it seems like they have always been part of our Loxdale family.

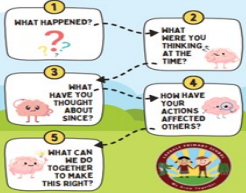
Harvest celebrations are fast approaching and it is a wonderful time of year to give thanks to those who provide us with food all year round. To celebrate this year, each class will be performing a harvest song for you to enjoy, this will be available for viewing on Friday 27th October on our school's Facebook page. Harvest is an important time of year, where we remember to give thanks for the food that is grown. Whilst we know these continue to be challenging times for many families, we would really appreciate any donations of non-perishable food items. These will be donated to the Good Shepherd.



All donations are welcome from Monday 23rd to Friday 27th October.

RESTORATIVE PRACTICE

STORY TELLING - IMPACT - SOLUTION



Restorative Practice - In the spring we adapted our behaviour policy to be more relational. We recognise that behaviour is a form of communication (whether conscious or unconscious) and we therefore take responsibility for listening to the needs a child is expressing through their behaviour, whilst setting clear boundaries and expectations. This year we have introduced 'Restorative Practice' and are working within its continuum:

- *Make & develop relationships
 - *Maintain relationships
 - *Repair harm & relationships.
- In school, any issues will be discussed from a restorative viewpoint using the story telling stages. Over time this restorative language will become second nature to our pupils- why not try it yourselves outside of the school setting. More details to follow to support this at home.

Please could we remind you that the expectation for home reading is at **least 3 times** a week. Please mark their diaries/Boom Reader to say you have listened to them read. It may only be a few minutes but they ALL count! Children's reading diaries and Boom Reader accounts will be checked by staff weekly.

"Reading for pleasure is the single biggest factor in success later in life, outside of an education. Study after study has shown that those children who read for pleasure are the ones who are most likely to fulfil their ambitions. If your child reads, they will succeed - it's that simple." Bali Rai

For more help and support - [Enjoy-Reading-Guide.pdf \(pearson.com\)](https://www.pearson.com/uk/resources/primary/reading/Enjoy-Reading-Guide.pdf)



The school's website - Don't forget we update our website regularly with information and support for parents/carers. Please follow the link to access [Parent/Carer Info/Wellbeing | Loxdale Primary School](#)

The online world has become almost as significant as the real one which consequently results in extra concerns about how to keep our children safe. To support with this, we have recently added an 'online safety' link with guidance relating to the most popular sites that children are accessing [Parent/Carer Info/Wellbeing | Loxdale Primary School](#)



We are thrilled to announce the appointment of our new Digital Ambassadors for the new academic year! We will be looking for these dedicated students to show exceptional leadership and commitment to promoting safe and responsible online behaviour within our school community.

We would also like to encourage all parents and carers to check out our 'Online Safety Shout Out' section on our school website, which can be found on our 'Online Safety' page. This is where we are looking to celebrate the positive online behaviours of our students at home. Let's continue to support and recognise our children's efforts in creating a safer digital environment for everyone.



Mental Health Champions -Year 6

Having completed their training last year and spending the remainder of the year offering low level support to others, our year 6 pupils will now take the lead as our mental health champions within school. They will be available to others at both break and lunch to support and are easily identifiable ... just look for those wearing a yellow cap!





The Loxdale Local



Autumn half-term 1 2023



As we continue to prioritise the safety and well-being of our students, we kindly ask for your cooperation during the dismissal process at the end of the school day.

To ensure a smooth and safe dismissal, we request that all parents and guardians **wait behind the barrier** set up in the designated area on the playground. This helps us manage the flow of children and ensures that each child is safely handed over to their parent or carer. This small step makes a big difference in helping us manage the dismissal process and ensures every child gets to you safely.

World Mental Health Day Thursday 10th October. The objective of this day is to raise awareness of mental health issues around the world. The day provides an opportunity for all of us to talk about and further promote mental health care for people worldwide. We will be helping to make World Mental Health Day a little brighter by taking part in **#HelloYellow**. On this day we encourage all to wear something yellow and offer a voluntary contribution of £1. All money collected will be donated to the YoungMinds charity.



Raise FREE funds
for us every time you
shop online

[Find out more](#)

Currys PCWorld eBay Booking.com JUST EAT
Uswitch sky M&S Groupon asos

Easyfundraising As Christmas approaches, and you are planning your festive shopping online, maybe do your shopping via <https://www.easyfundraising.org.uk/causes/loxdalepaws/> to help raise money for your children and school.

Over the last couple of years you have all helped to raise hundreds of pounds by just doing your normal online shopping via easyfundraising. It may not sound like a lot, but it all adds up. Thank you so much.

All this money has been raised without anyone having to do anything other than do their normal online purchases through easyfundraising. Now think what that could be when you all do your Christmas shopping online.

Wolverhampton Outreach Service:: Parent Workshops 2024

Tuesday 15th October: Understanding masking in Autism

Venue: Warstones Primary School 10:00 - 12:00

<https://www.eventbrite.co.uk/e/parent-workshop-understanding-masking-in-autism-tickets-1009171026707?aff=ebdsoporgprofile>

Thursday 14th November: Supporting Emotionally Based School Non Attendance with Michelle Dudley

Venue: Warstones Primary School 10:00 - 12:00

<https://www.eventbrite.co.uk/e/parent-workshop-emotionally-based-school-non-attendance-tickets-1009175399787?aff=ebdsoporgprofile>

Wednesday 27th November: Understanding ADHD with Amanda Moran

Venue: Warstones Primary School 10:00 - 12:00

<https://www.eventbrite.co.uk/e/parent-workshop-understanding-adhd-tickets-1009181869137?aff=ebdsoporgprofile>

Wednesday 11th December: Understanding and supporting sensory sensitivities with Jade Calleja-Reader

Venue: Warstones Primary School 10:00 - 12:00

<https://www.eventbrite.co.uk/e/parent-workshop-understanding-and-supporting-sensory-sensitivities-tickets-1009182380667?aff=ebdsoporgprofile>

All of these workshops are open to parents/carers whose children have a Special Educational Need or Disabilities, including those children who are currently undergoing assessment.

To book tickets or to see the full parent support offer - visit the SEND Early Identification and Support webpage and search for parent support offer:

<https://www.wolverhampton.gov.uk/education-and-schools/send-early-identification-support-services>





The Loxdale Local



Autumn half-term 1



Monty Pupdate- After a summer of walking through the moors, devouring ice-creams and paddling in the sea, Monty has returned to school refreshed and ready for the new term. As ever, he loves nothing more than being around school with the children. This is a vital part of his development as our school's wellbeing dog, but it is also a wonderful opportunity to enhance the development of our pupils as they learn about caring for a living creature, as well as interacting safely with animals. If Monty is not on duty (wearing his necktie), the children are more than welcome to engage with him.

Please support us by remembering these top tips:

- *Never run at a dog- we know you are excited to stroke Monty but please approach him calmly
- *Use a quiet voice- dogs have very sensitive hearing. Please do not scream, squeal or shout around Monty
- *Never touch a dog's mouth- dogs have sharp teeth and can bite. Please do not touch Monty's mouth.
- *Always be safe around animals. Do not touch your own mouth after handling and stroking Monty.
- *Never stroke a dog from behind or pull their tail- please stand in front of Monty and his handler before you stroke him. Stroking a dog from behind can startle them and they may react.
- *Do not overcrowd a dog - if you have been allowed to stroke Monty please then move away and give him some space. It is not fair for a dog to be surrounded by children or people. This can leave them feeling scared and they may react.



Remember Monty has a right to be safe too- let's all be comfortable and safe together!

Please can we remind you that smoking cigarettes or vaporizers is not acceptable on, or near the gates of, school premises.

RWI lesson links: Please keep a look out in your emails for video links to phonics lessons that you can watch with your child. Every two weeks a total of 10 different lesson links each will go out to Reception, Year 1 and Year 2 parents/carers. This is a great way for you to know which sounds your child has been learning at school and help you to better support them with their reading at home.

Parental Concerns:

Could any parent wishing to discuss any concerns regarding their child, please see their class teacher in the first instance. If any concerns cannot be resolved with the class teacher then please feel free to make an appointment to see one of our Assistant Headteachers: Mrs Mould (Key Stage 2), or Miss Cowley (Key Stage 1 and EYFS.) If the problem is still unresolved then please see our Deputy Headteacher, Mrs Wright-Jones, or if the problem is still unresolved, Mrs Scott (Headteacher).



the sandwell well-being charter mark

We are thrilled to be currently taking part in the Sandwell Charter Mark Wellbeing audit. As you know, for several months we have been developing a school action plan to support our wellbeing initiative and ensure that this remains a part of our school's culture. Over the next few weeks, the team will be collecting the views of our community members; a big thank you to those who completed the parent/carer surveys. Our assessment date will be in October, where the team will meet with both pupil and parent focus groups to gain a greater understanding of our wellbeing support. We are very hopeful that alongside our Well-being Award gained in the summer term, we will achieve the Charter Mark Award too.

A polite reminder - due to health and safety rules, the EYFS or any play equipment is not to be used before or after school by children. Please may we ask that parents/ carers supervise children carefully and do not allow them to run around and play on the equipment. PLEASE can children also be supervised when in the cycle shed too as too many cycles are being damaged. Please use the scooter pods rather than putting scooters in the bike sheds. Thank you for your support with this matter.





Loxdale Diary Dates



Week 1	
2 nd September	INSET Day
3 rd September	INSET Day
4 th September	INSET Day
Week 2	
12 th and 13 th September	Year 6 Team building – Play service
Week 3	
16 th September	Clubs to begin
20 th September	Individual pupil photographs
Week 4	
23 rd September	Sibling photographs
Week 5	
1 st October	Flu Vaccinations – (Reception -Y6)
2 nd October	National Poetry Day
3 rd October	Census Day
Week 6	
7 th – 11 th October	Black History Week
8 th October	SEND Coffee Morning - eating
11 th October	Year 5 Class Assembly – 2:30pm
Week 7	
Week 8	
24 th October	Parents Evening
25 th October	Harvest Festival – each class to upload onto social media channels
25 th October	Own Clothes – pay in bottles
25 th October	Break Up for half term
Half term – 25 th October – 3 rd November	

Our new School Council are busy planning a special meal to celebrate our Black History Week in school.

They are planning to speak to Ana - our school cook—to design their own menu to celebrate Black History.

Please look out for the letter from our Year 6 School Councillors and order the meals from our Arbor App.

The theme for our Black History Week is the 'Windrush' generation.

Don't forget to wear colours associated with Black History on Friday 11th October (black, red, green and/or yellow).



Children being collected at the end of the school day:

If a responsible adult, who is known to your child, comes to collect them from school, then your child will be handed over to them, regardless of whether they are on the contact card. This is due to the number of issues with continued changes to contact details. If parents do not want a certain individual to collect their child then please could you inform school in writing. **Brothers or sisters sent to collect children must be of at least secondary school age and judged to be competent by school.** We reserve the right not to allow children to be taken home by other minors if there are any concerns around safety of the children at Loxdale.

Late collections: May we also please remind parents that children must be collected on time at the end of the day. If, for any reason you are going to be late, please inform the school in advance. As you will appreciate, persistent lateness will have an impact on the running of school. **If you are later than 3.45pm, your child will be put into teatime club and a charge will be applied.**

PLEASE MAY WE RESPECTFULLY ASK PARENTS/CARERS TO PROPERLY SUPERVISE THEIR CHILDREN UPON COLLECTION FROM SCHOOL AT THE END OF THE DAY.

We have had a number of incidents where children have run away from parents/carers down the path, where pedestrians have been knocked over by children running down the path and also where bikes and scooters have been damaged in the bike sheds where children have been unsupervised and have been 'messaging around' with other children's bikes and scooters. At the end of the school day, we have almost 1000 people on site and we ask that everyone is respectful of each other and adheres to our request for an orderly dismissal from the school premises.

MANY THANKS FOR YOUR SUPPORT IN THIS MATTER.

Week 1	
8 th November	Year 4 Class Assembly – 2:30pm
8 th November	Whole school Diwali Day – dress up in colourful/traditional clothes
Week 2	
11 th November	Flu Vaccinations
11 th – 15 th November	Anti-Bullying Week
11 th – 15 th November	EYFS Nursery Rhyme Week
12 th November	Odd Socks Day – whole school to wear odd socks
15 th November	Children in Need Day
Week 3	
22 nd November	Own clothes - pay in chocolate
25 th – 26 th November	Year 2 Oak - Kingswood
27 th – 28 th November	Year 2 Sycamore - Kingswood
Week 4	
29 th November	Own clothes – pay in toiletries
Week 5	
2 nd December	SEND Coffee Morning – toileting and constipation
4 th December	Reception and Year 1 Singalong AM - Reception Willow and Year 1 Ash 9:30am PM - Reception Maple and Year 1 Elm 2:30pm (4 tickets per child)
5 th December	Christmas lunch and Christmas jumper day Christmas Fair – 3:45 – 6:30pm
6 th December	INSET Day

Find us at:



@Loxdale_Primary



Loxdale Primary



loxdaleprimaryschool.co.uk